

# AGASY

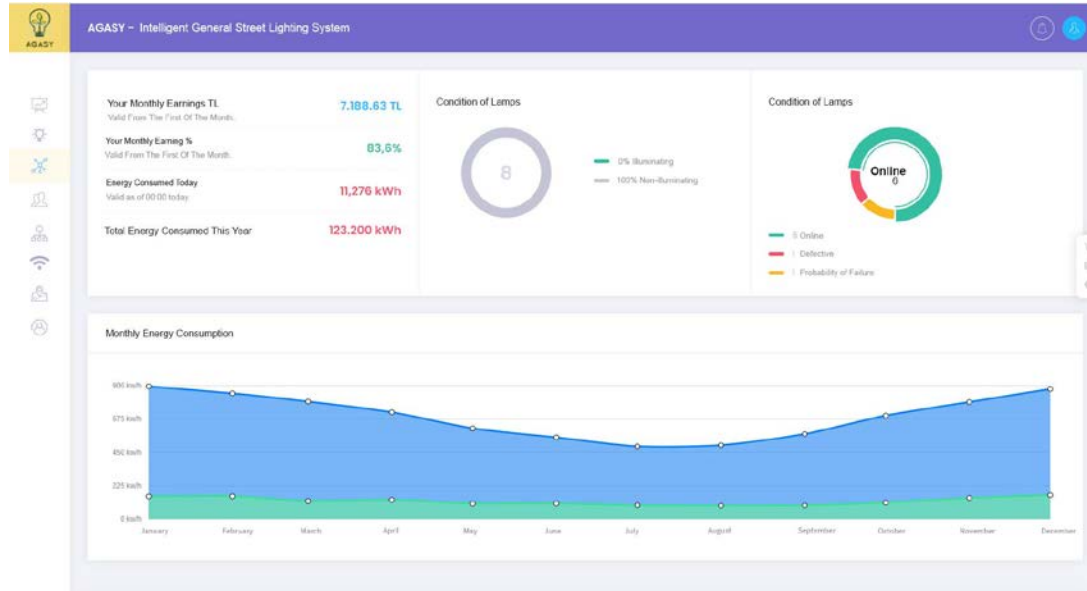
Intelligent General Street Lighting System

## SMART LIGHTING and ENERGY EFFICIENCY

**ÖLÇSAN**  
“kalitenin ölçüsü”

# Smart Street Lighting

AGASY (Smart General Lighting System Management) platform developed within the scope of Smart and Safe Cities; With IoT modules, it manages the lighting systems in indoor and outdoor spaces, and saves money by automatically reducing and/or turning off the unnecessary lighting power.



## Features

- Plug & Play installation, Embedded intelligence, Direct communication between devices
- Self-sufficient / stand-alone device; time and location, situation, what to do
- Wireless connectivity, server-side data processing is not needed
- Revolutionary simple self-configuring wireless mesh network – a single HW component
- Automatic or semi-automatic network configuration, Direct device-to device communication including application level
- Parking, driver and passenger management system
- Using Information Systems using traffic density sensors, meteorological sensors
- Mass transit, waste management and car sharing management...
- Integration of all kinds of sensor systems (noise, temperature, humidity, security, etc.) that will provide data by helping decision support systems throughout the city



*The integrated solution that stands out among Smart and Safe City solutions is Smart Lighting Management.*

## Application Areas - Outdoor

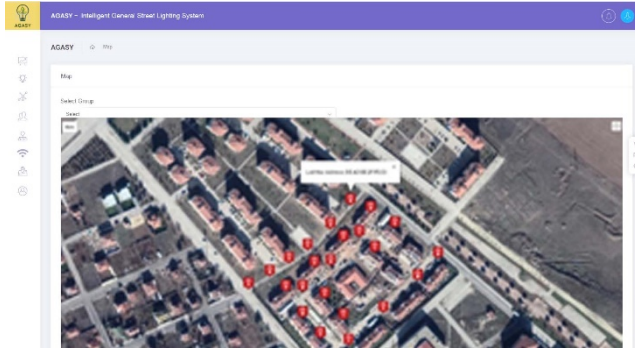
- Highways
- Street
- Park, garden
- Organized Industrial zones
- Production and Logistics facilities
- Campuses
- Environmental Safety

## Applications Areas – Indoor:

- Factories
- Smart Building Applications
- Offices

# System Management

Our AGASY application; City on CLOUD – Smart and Safe City Management Software, integrated with STMS – Integrated Physical and Cyber Security software and KIMO - Access Control software, can provide additional support to the security of your institution and campus, as well as can be used alone for Lighting Management.



## Luminaire Management

With the Luminaire Management module, profile arrangements, installations and connections between all luminaires are defined and managed locally and at points. Identity management and authentication of all devices is done. By checking the health status of the devices, the maintenance/change periods of the devices that are likely to malfunction are determined/implemented and followed.

## Functions

- Savings up to 85% and maintenance savings up to 70%
- Very low carbon emission and less light pollution
- Longer luminaire life time
- LoRa TYPE C, PLC –Power Line Communication and 869MHz radio link support.
- Monitoring based on the vector map format
- End to end security – 256bit AES security
- 0/10, 1/10 ve DALI protocol support
- Mobil device support for easier on-site management
- Integrated movement and light sensors

## Online Monitoring

It is the monitoring screen that instantly displays all luminaires, control modules, endpoint devices and sensors on the map in real time. Managers and support units monitor the devices on the screen, examine the status reports and can intervene remotely.

#	Name	Power	Voltage	Cable Temperature	EM	Transactions
6	LUM0001	50	220	4000	70	00 00
7	LUM0002	50	220	4000	70	00 00
8	LUM0003	50	220	4000	70	00 00
9	LUM0004	50	220	4000	70	00 00
10	LUM0005	50	220	4000	70	00 00
11	LUM0006	50	220	4000	70	00 00
12	LUM0007	50	220	4000	70	00 00
13	LUM0008	50	220	4000	70	00 00
14	LUM0009	50	220	4000	70	00 00
15	LUM0010	50	220	4000	70	00 00

## Advantages

- A common Smart Lighting and Security platform
- Cloud support
- Easy integration for 3rd party devices/application via WEB services

## Thanks to the Smart System;

- Up to %85 energy savings
- Up to %70 maintenance savings
- Fault detection tracking
- Longer luminaire life
- Much less light pollution

# AGASY Licensing

With AGASY, we offer our customers the licensing packages they need with different options.

AGASY Modules	Lite	Basic	Professional	Enterprise
Monitoring	✓	✓	✓ ✓	✓ ✓ ✓
Reports	✓	✓	✓ ✓	✓ ✓ ✓
Device Operations	✓	✓	✓	✓
Definitions	✓	✓	✓	✓
Authority Profiles	✓	✓	✓	✓
User Operations	✓	✓	✓	✓
Luminaire Management	-	✓	✓	✓
Notifications, E-Mail	-	-	✓	✓
Data Transfer (SQL, Excel)	-	-	✓	✓
Map	-	-	O	✓
Plan	-	-	O	✓
Card Life Cycle	-	-	O	✓
<b>Supports</b>				
Web User Interface	✓	✓	✓	✓
Multiple Monitor Support	-	-	✓	✓
KIMO/STMS/CoC integration App	-	O	O	✓
Device License Support	1	S	S	S

O=Optional: Selected by the customer

S=Selective: The customer should choose according to the number of readers.

## Supported Product List:

Luminaires with 0-10, 1-10 and DALI protocols.