



## Intelligent Video, Security and Information Management Platform

Senstar Symphony software delivers an all-in-one solution for video, security and information management. Senstar Symphony works with cameras from all major manufacturers, scales to deployments of any size, and is easy to use and configure.

Built-in support for industry-leading video analytics, perimeter intrusion detection sensors, and access control devices makes Senstar Symphony a highly versatile and cost-effective video surveillance platform.

### SCALABLE, HIGH-PERFORMANCE ARCHITECTURE

Senstar Symphony uses a unique, high-performance architecture that simplifies deployment planning, reduces server costs and is highly scalable:

- Optimized for all video management software (VMS) functions (video, management and analytics), Senstar Symphony does not require dedicated servers for specific functions.
- Built-in server redundancy and automatic failover avoids complex and costly Windows® Clustering requirements.
- Support additional cameras by adding additional server resources – no reconfiguration or licensing scheme changes required.

## Features and Benefits

### Scalable, high-performance architecture

- Scales to support thousands of cameras
- Simple per-camera licensing (no client or server limitations)
- Built-in server, database and storage failover
- Centralized cloud management via Senstar Enterprise Manager™

### Easy to use

- Web-based administration
- Powerful, intuitive Windows® operator client
- Web and mobile clients
- Graphical video analytic configuration

### Open ecosystem

- Multi-vendor camera support
- Runs on off-the-shelf hardware
- ONVIF Profiles S and G
- RESTful API

### Intelligent video analytics

- Native video analytics for alarm generation and business intelligence
- Available individually or bundled

### Cybersecurity and privacy

- Role-based access with granular permissions
- Privacy controls
- TLS 1.2 encryption

## OPEN ECOSYSTEM

Senstar Symphony installs on off-the-shelf hardware. It supports thousands of network devices as well as industry standards, including ONVIF profiles S and G. Out-of-box integrations with PSIM, intrusion, and access control products improve operator efficiency by delivering a seamless view of events, while its RESTful API prevents vendor lock-in.

## EASY TO USE OPERATOR INTERFACES

Senstar Symphony includes several options for viewing video:

- **Windows® operator client** – A full-featured, intuitive video and alarm management client. Controls are displayed based on device capability and user permissions, including PTZ controls, access control, intrusion sensors, two-way audio, and general I/O.
- **Web interface** – An HTML5-compliant web interface replicates key VMS functionality, including video playback, camera control, event timeline, and reports.
- **Mobile apps (iOS and Android)** – Support live video and playback, video analytics, PTZ control, and alarm management. Each app can connect to multiple servers, enabling a user to remotely monitor several deployments.



Senstar Symphony mobile apps

- **Video wall** – Included with an enterprise license, enables a highly customizable layout driven by video analytic rules, manual configuration, and camera drag-and-drop.

## NATIVE ANALYTICS

Senstar Symphony has been developed from the ground up to support video analytics. Server-based or embedded analytics are seamlessly supported, as well as third-party applications through the metadata engine.

Analytic applications include motion tracking, auto-PTZ tracking, face recognition, license plate recognition, left/removed object detection, and people counting. For a complete list, refer to Senstar's Video Analytics datasheet.

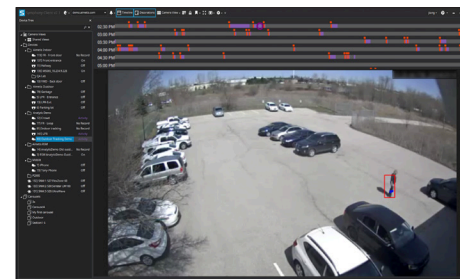


Fully integrated intelligent video analytics

## INTELLIGENT SEARCH AND INVESTIGATION

Senstar Symphony includes a graphical timeline and intelligent search capabilities. By leveraging events and metadata generated by its video analytics, operators can quickly find, review, and export video containing specific events or people.

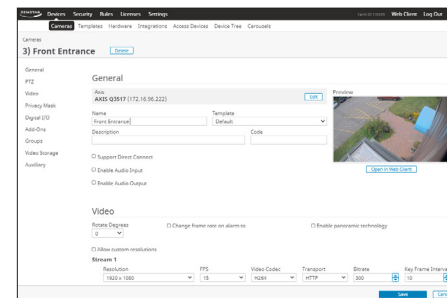
Comprehensive reports, including operator activity, event history, and video analytic results, can be also generated and exported.



Timeline graphically shows events, color-coded by type

## BROWSER-BASED ADMINISTRATOR CLIENT

Administration is handled via a browser-based client, eliminating the need to install and maintain a separate Windows® management application. The client can be accessed anywhere on the network. Reusable templates and rules speed up the configuration of large deployments.



Simple and efficient browser-based administration

## CENTRALIZED CLOUD MANAGEMENT

Through the use of Senstar Enterprise Manager, Senstar Symphony can be managed centrally, which significantly reduces the administrative burden typical in multi-site deployments.

Software updates, configuration, and health monitoring can all be centralized ensuring a strong and up-to-date video deployment, while limiting downtime and operation costs.

## Technical Specifications: Senstar Symphony Clients

Senstar Symphony client support is included with camera licensing (no additional client software purchases required).

	Windows® Client	Web Client	Mobile Client	Thin Client
<b>CORE FEATURES</b>				
Supported operating system/platform	Windows® 7, 8 or 10	Web browser	iOS or Android	Linux appliance
Number of concurrent server connections	unlimited	unlimited	unlimited	1
Customizable user interface	■			
Graphical timeline	■	■		■
Hierarchical site navigation	■	■	■	
Camera list navigation	■	■	■	
Visual tracking links (video overlay hotspots)	■			
Combine cameras from multiple servers and sites into single layouts	■			
Multi-monitor support (including 4K)	■			
Camera sequence	■			■
Panoramic (360-degree) support	■	■	■	■
Manually trigger outputs	■	■	■	
Advanced video analytic search (intelligent search)	with add-on			
Integrated messenger	■			
Multi-camera alarm console	■			
Video export	(multi-camera)			■
Bookmark events	■			
Alarm log	■	■	■	
Remote support module	■			
Multiple languages	■	■	■	■
Basic map support	■			
Dynamic GIS map support (Enterprise server license)	■			
Graphical Senstar sensor status with intrusion location	■			

	Windows® Client	Web Client	Mobile Client	Thin Client
<b>PTZ SUPPORT</b>				
Manual movement control	■	■	■	■
Point and click control	■	■	■	
Zoom on marked area	■	■	■	■
Go to preset positions	■	■	■	■
Joystick support	■			■
<b>VIRTUAL MATRIX</b>				
Customizable multi-camera layouts	■	■		■
Configurable display options (fixed)	■			
Configurable display options (motion)	■			
Configurable display options (alarm)	■			■
<b>USER ACCESS</b>				
User monitoring	■			
Permissions per user	■	■	■	■
Permissions per user group	■	■	■	■
Security profiles	■			
Microsoft Active Directory	■	■	■	
Cross-domain authentication (Professional/Enterprise server license)	■	■	■	
Restrict simultaneous logins (Professional/Enterprise server license)	■	■	■	
Supervisor logins (Professional/Enterprise server license)	■			
<b>REPORTS</b>				
Login report	■			
Alarm counts and statistics	■			
Object count reports (e.g., people, vehicles)	with add-on			

## Technical Specifications: Senstar Symphony Server

	Standard License (single server)	Professional License (multi-server)	Enterprise License (high availability)
<b>CORE FEATURES</b>			
Supported operating systems	Windows® 7, 10, Server 2008, 2012, 2016, 2019		
Number of cameras per server	1024	1024	1024
Number of concurrent client connections	unlimited	unlimited	unlimited
Multi-server (server farm)	—	unlimited	unlimited
HTML5-compliant web client	■	■	■
Mobile application (iOS, Android)	■	■	■
Server virtualization	■	■	■
2-way audio	■	■	■
Unicast, multicast and multistream support	■	■	■
Network video support (MJPEG/MPEG-4/h.264/h.265)	■	■	■
Device packs	■	■	■
Multiple languages	■	■	■
Customizable user access levels	■	■	■
Automatic server and database failover			■
Video wall			■
<b>STORAGE AND ARCHIVING</b>			
Record locally or to edge/network storage	■	■	■
Record on motion (from camera), schedule, alarm and continuous	■	■	■
Redundant recording			■
Failover recording			■
<b>ALERTS AND NOTIFICATIONS</b>			
Mobile devices (iOS and Android)	■	■	■
I/O devices	■	■	■
Email notification, FTP, TCP, SNMP, OPC	■	■	■

	Standard License (single server)	Professional License (multi-server)	Enterprise License (high availability)
MANAGEMENT			
Automatic camera detection	■	■	■
Centralized device management	■	■	■
Automatic configuration backups	■	■	■
Uninterrupted configuration changes	■	■	■
Remote diagnostics	■	■	■
SNMP health monitoring	■	■	■
CPU overload protection			■
Cloud management	Requires Senstar Enterprise Manager		
INTEGRATION			
External I/O devices	■	■	■
Generic events via TCP/IP	■	■	■
ONVIF temperature events	■	■	■
Alarm panel	■	■	■
Access control	Symphony AC only	■	■
Server API/SDK		■	■
OPC data access support		■	■
PRIVACY CONTROLS			
Granular user permissions and security profiles	■	■	■
Two-person rules		■	■
Time-based access to video		■	■
PTZ and device access permissions	■	■	■
Dynamic and static privacy masks	■	■	■
Create masks during video export	■	■	■